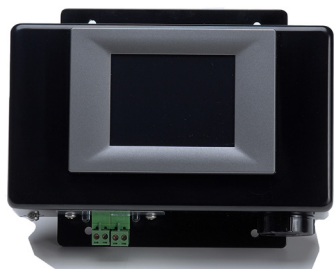


EMS-TP-3.5

3.5 inch Touch-Screen with Browser Enabled Graphical User Interface (GUI) for Telecom Environments



Overview

The EMS-TP-3.5 is designed to seamlessly work with Tridium's Niagara^{AX} family of products for the Telecommunications industry. This Touch screen solution enables installers and service personnel to view the values of all connected Enhanced Monitoring System (EMS) variables and digital input alarms without the need for a PC or Laptop connection.

The EMS-TP-3.5 comes complete with preloaded Windows CE Explorer to enable the user to easily browse the EMS Web Pages in Tridium's EMS-SM-PJ-545-AX, and EMS-SM-SC-545-AX Site Managers

Features

- 3.5" QVGA TFT LCD providing 320 x 240 resolution with 64K colors, high contrast and wide viewing angle
- Fanless Cooling System design
- NEMA4 compliant front panel to resist harsh conditions
- Durable Touchscreen (1,000,000 touches)
- Intel PXA270 processor, Microsoft WinCE software

Specifications

| LCD Specifications | | Touchscreen Specifications | |
|-----------------------|--------------------------|----------------------------|--|
| Display Type | TFT LCD | Touch Type | 4 Wire Analog Resistive |
| Size | (diagonal) 3.5" | Base Glass Construction | Glass |
| Maximum Resolution | 320 x 240 (QVGA) | Resolution | Continuous |
| Maximum Colors | 64K | Light Transmission | 80% typical |
| Pixel Pitch | 0.073 x 0.219 mm (W x H) | Controller | DMC9000 |
| Viewing Angle | 120° (H) x 110° (V) | Software Driver | Windows CE (embedded) |
| Luminance | (cd/m ²) 400 | Durability | 1 million times with an 8 mm diameter silicone rubber finger |
| Contrast Ratio | 300 | | |
| Operating Temperature | -20° ~ 60°C (Ambient) | | |
| Backlight | LED | | |
| Backlight MTBF | 30,000 hours | | |

Platform

- CPU Intel PXA270 312MHz
- Memory 64MB on board SDRAM
- LAN 10/100Base-T x 1
- Storage 32 MB on board NOR flash

I/O Ports & Communications

- One 10/100 MB Ethernet port

Operating System

- Microsoft Windows CE 5.0 (English Version)
- Watchdog Timer Programmable as 250 ms, 500 ms, 1 second

Power Consumption

- Input Voltage: 48 Vdc (Nominal)
- Maximum Current: 500ma
- Auxiliary Power Output (Available for ancillary equipment)
- Output Voltage: 48Vdc (Nominal)
- Maximum Current Output: 400ma

Storage

- On Board 32MB NAND Flash

Chassis

- Construction: Metal Mounting Enclosure
- Mounting Panel
- Weight: 1.4 lbs. (0.64 kg)
- Dimensions (W x H x D): 7.56" x 5.81" x 2.69" high (192 mm x 148 mm x 68.3 mm)

Environment

- Fanless Convection Cooling Design
- Operating temperature range: 0° to 50°C (32°F to 122°F)
- Storage Temperature range: 32°F to 140°F (0°C to 60°C)
- Relative humidity range: 10% to 95% @ 40°C, non-condensing
- Vibration: 1 Grms (Random, Operating)

Agency Listings

- Touchscreen : CE, FCC Class A, BSMI (Bureau of Standards, Methodology and Inspections), UL, CUL
- Front Panel: NEMA 4

Ordering Information

| Part Number | Description |
|-------------|--|
| EMS-TP-3.5 | 48 VDC 3.5" Browser Touch Panel For System Commissioning, Diagnostics, & Display |